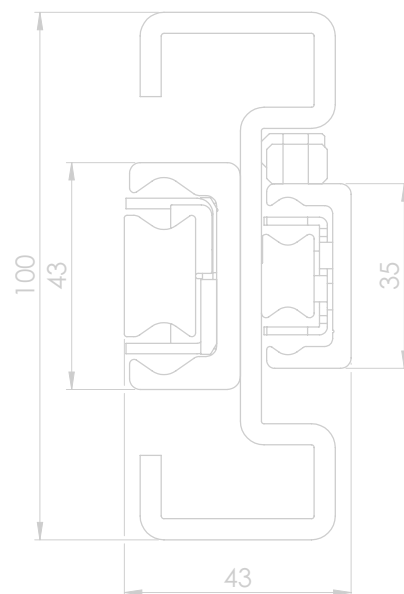




Telescopic Rail DSC43

New shape,
compact and stiff



www.rollon.com

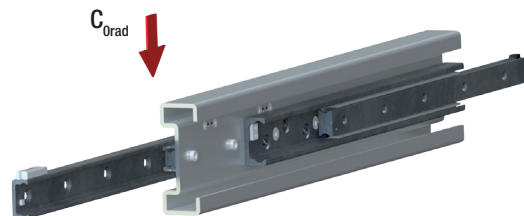
ROLLON[®]
Linear Evolution



Technical features:

- Compact size due to new design
- Moving element smaller than fixed one
- High stiffness with high load capacity
- Optimal balance between high performance and light weight
- Induction hardened raceways for long service life

Type	Length [mm]	Stroke [mm]	Load capacity C_{Orad} [N]
DSC43	530	552	2,389
	610	620	2,960
	690	726	3,091
	770	793	3,662
	850	860	4,242
	930	966	4,365
	1,010	1,033	4,942
	1,090	1,100	5,524
	1,170	1,206	5,144
	1,250	1,273	4,930
	1,330	1,379	4,474
	1,410	1,446	4,311
	1,490	1,513	4,159
	1,570	1,607	3,886
	1,650	1,686	3,710
	1,730	1,753	3,597
	1,810	1,847	3,391
1,890	1,926	3,256	
1,970	2,020	3,086	



IT-98UK (printed: 01/12)

ROLLON S.r.l.

Via Trieste 26

I-20059 Vimercate

Phone: (+39) 039 62 59 1

Fax : (+39) 039 62 59 205

e-mail: infocom@rollon.it

www.rollon.com